

Embases STANDARD CETOP

Embases multiples CETOP 3

Embases multiples CETOP 5

Embases multiples CETOP 7

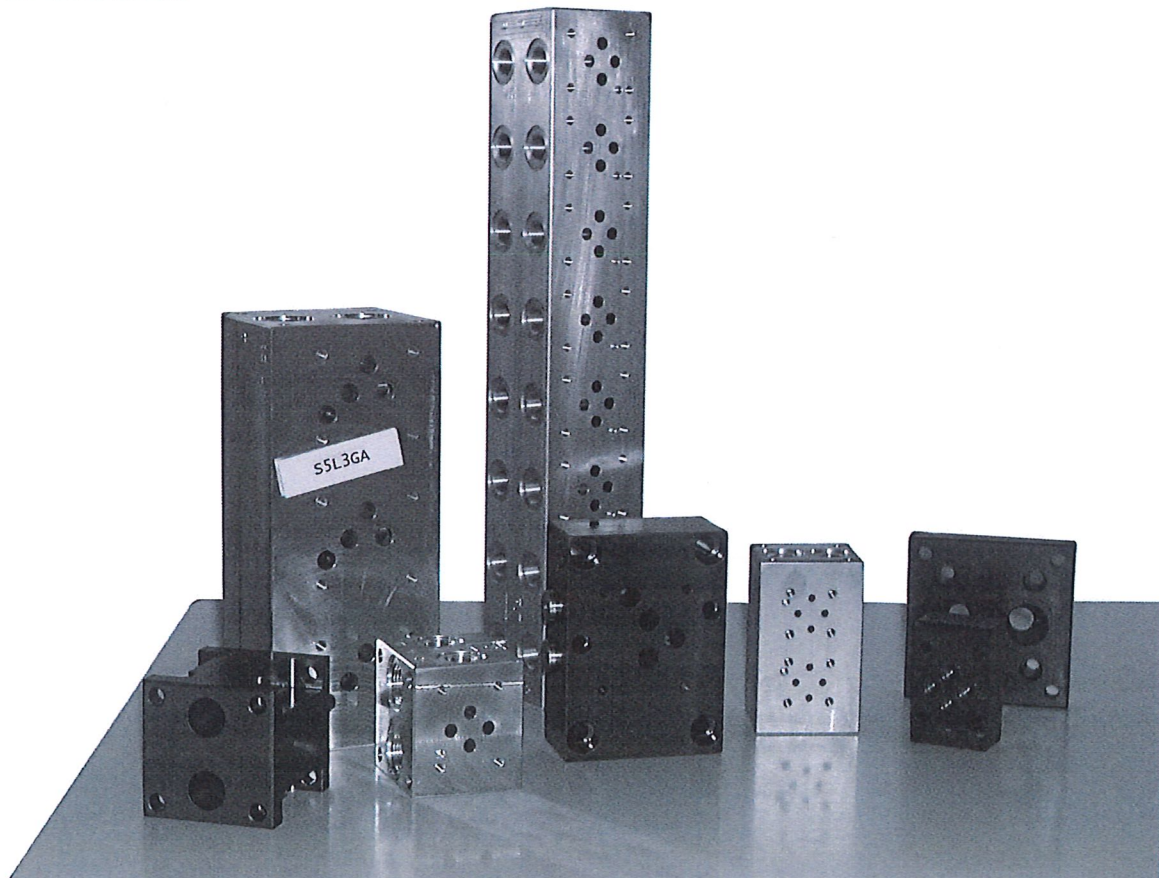
Plaques de Jonction

Plaques de Fermeture & de Pontage

Plaques de Prises de Pression

Plaques d'Adaptation

Vis creuses





NUMER HYD

MULTI-STATION MANIFOLD CETOP 3

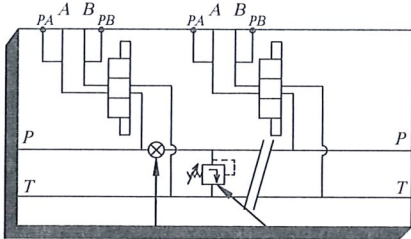
S3A

A24

REAR EXIT

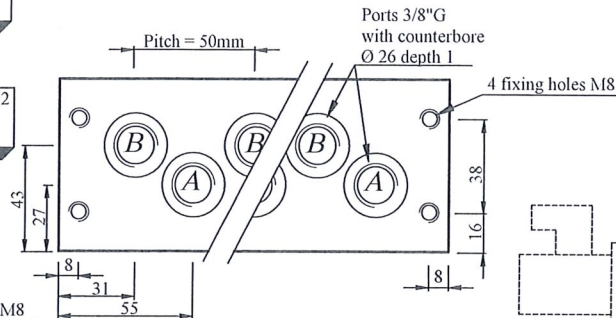
- Sorties arrière
- Rückseitig

- Service pressure 500bar for steel - 300bar for aluminium alloy.
- Possibility of connection with a special manifold.
- Possibility of connection with several block S3 or S5.

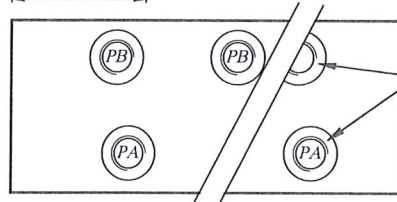
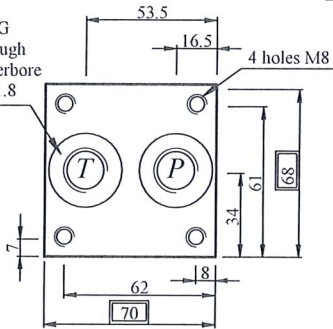


Tapped hole 3/8"G for possible plug to separate the P of first station (plug out of supply)

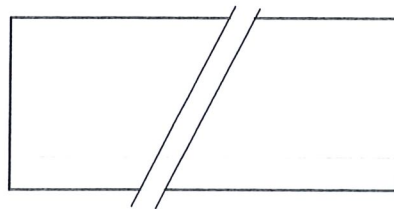
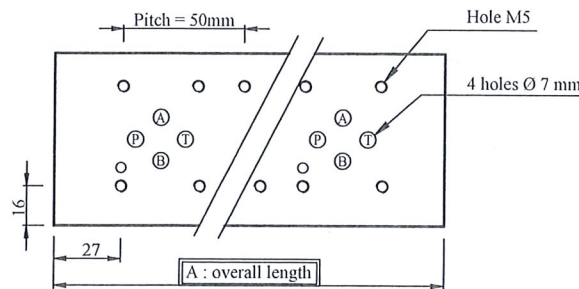
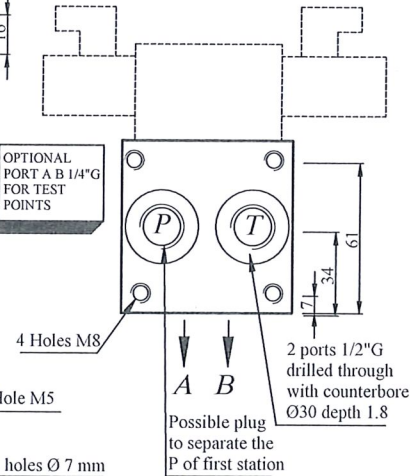
Cavity C10.2 optional



2 port 1/2"G drilled through with counterbore Ø30 depth 1.8



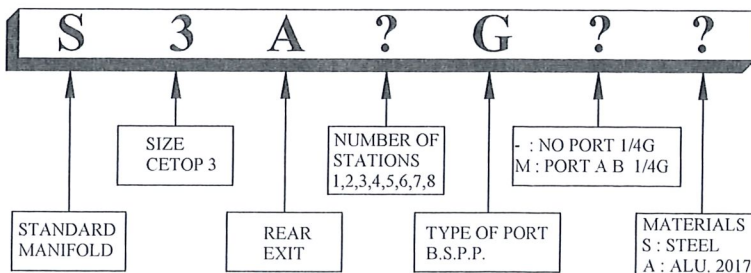
OPTIONAL PORT A B 1/4"G FOR TEST POINTS



DIMENSIONS

| MODEL | A | weight (kg) | |
|--------|-----|-------------|-----|
| | | STEEL | ALU |
| S3A1G- | 85 | 2.6 | 0.9 |
| S3A2G- | 135 | 4.1 | 1.5 |
| S3A3G- | 185 | 5.7 | 2.1 |
| S3A4G- | 235 | 7.3 | 2.6 |
| S3A5G- | 285 | 8.9 | 3.2 |
| S3A6G | 335 | 10.5 | 3.8 |
| S3A7G- | 385 | 12.0 | 4.3 |
| S3A8G- | 435 | 13.6 | 4.8 |

MODEL CODE



STANDARD MANIFOLD

SIZE CETOP 3

REAR EXIT

NUMBER OF STATIONS 1,2,3,4,5,6,7,8

TYPE OF PORT B.S.P.P.

- : NO PORT 1/4G
M : PORT A B 1/4G

MATERIALS
S : STEEL
A : ALU. 2017A



MULTI-STATION MANIFOLD CETOP 3

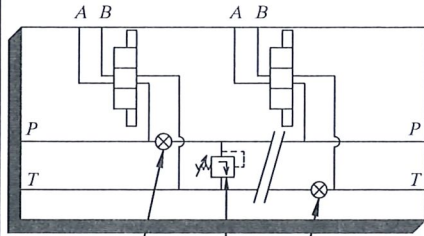
S3L

A24

SIDE EXIT

- Sorties latérales
- Seitlich

- Service pressure 500bar for steel - 300bar for aluminium alloy.
- Possibility to connect with a special manifold.
- Possibility to connect with several block S3 or S5.

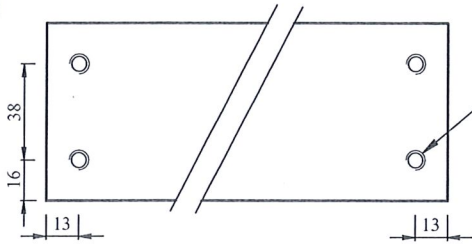


Cavity C10.2 optional

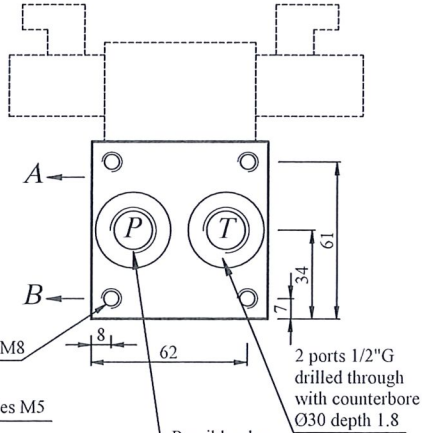
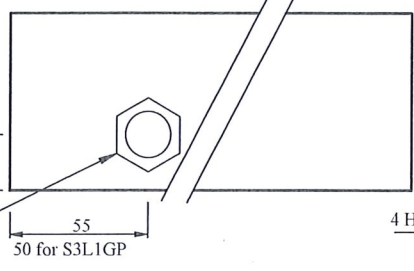
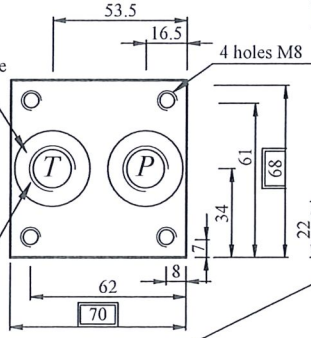
Tapped hole 3/8"G for possible plug (plug out of supply)

2 port 1/2"G drilled through with counterbore Ø30 depth 1.8

Possible plug to separate the T of first station



4 fixing holes M8



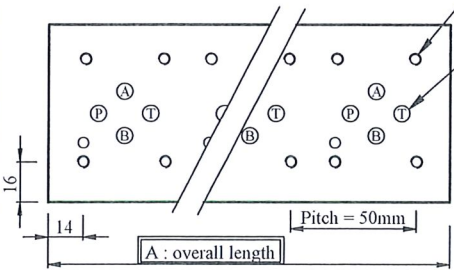
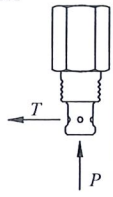
2 ports 1/2"G drilled through with counterbore Ø30 depth 1.8

Possible plug to separate the P of first station

* OPTIONAL CAVITY FOR VALVE C10.2 COMPONENT FOR EXAMPLE : (OUT OF SUPPLY)

- * HYDRAFORCE VC10.2 RV10-20/RV10-26
- * EATON C10.2 RV2-10/RV5-10
- * PARKER C10.2 RD102
- * HYDAC FC10-2 DB10P
- ETC...

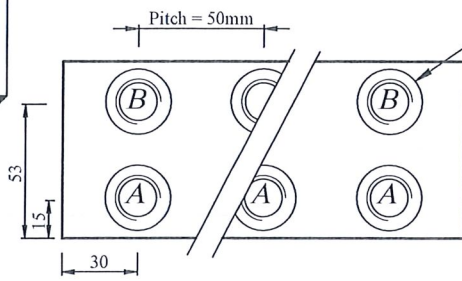
* AND ALSO : DIRECTIONAL VALVE RESTRICTOR CHECK VALVE



Holes M5

4 holes Ø 7 mm

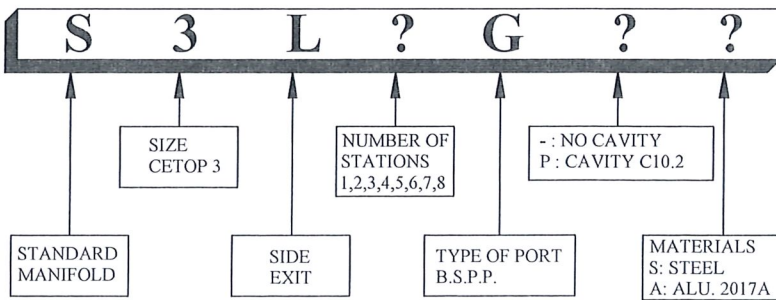
Ports 3/8"G with counterbore Ø 26 depth 1



DIMENSIONS

| MODEL | A | weight (kg) | |
|---------|-----|-------------|-----|
| | | STEEL | ALU |
| S3L1G- | 60 | 1.7 | 0.6 |
| S3L1GP- | 80 | 2.3 | 0.8 |
| S3L2G- | 110 | 3.3 | 1.2 |
| S3L3G- | 160 | 5.0 | 1.8 |
| S3L4G- | 210 | 6.6 | 2.3 |
| S3L5G- | 260 | 8.2 | 2.9 |
| S3L6G | 310 | 9.7 | 3.5 |
| S3L7G- | 360 | 11.3 | 4.0 |
| S3L8G- | 410 | 13.0 | 4.6 |

MODEL CODE





NUMER HYD

MULTI-STATION MANIFOLD CETOP 3

S3L.M

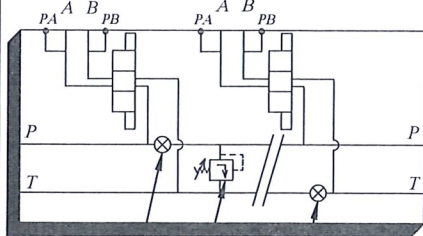
A24

WITH PORT 1/8" G ON A & B

SIDE EXIT

- Sorties latérales
- Seitlich

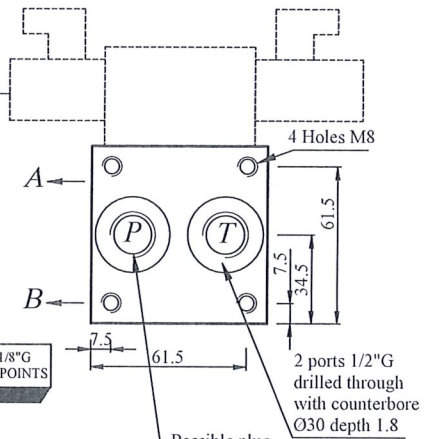
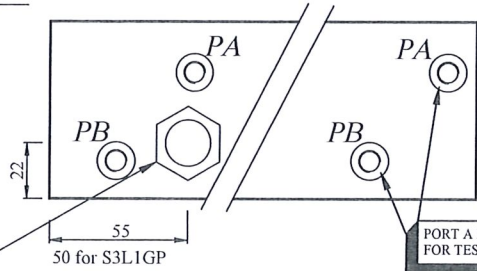
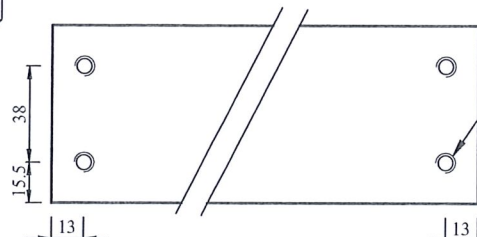
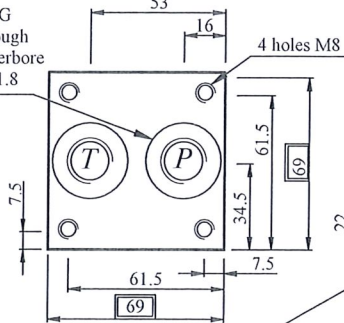
- Service pressure 500bar for steel - 300bar for aluminium alloy.
- Pressure test points 1/8" G on A & B.
- Possibility to connect with a special manifold.
- Possibility to connect with several block S3 or S5.



Cavity C10.2 optional

Tapped hole 3/8" G for possible plug (plug out of supply)

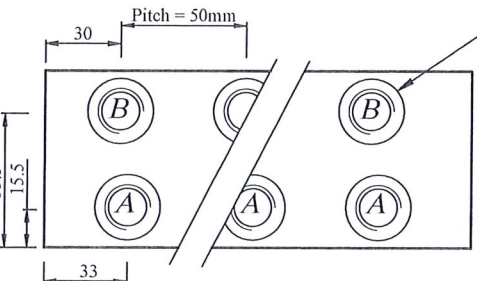
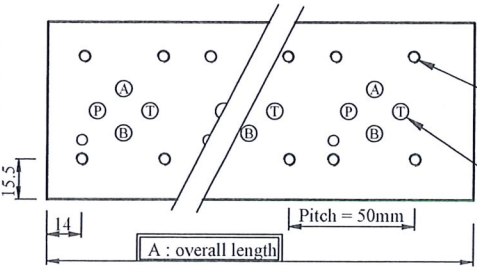
2 port 1/2" G drilled through with counterbore Ø30 depth 1.8



*** OPTIONAL CAVITY FOR VALVE C10.2 COMPONENT FOR EXAMPLE : (OUT OF SUPPLY)**

- * HYDRAFORCE VC10.2 RV10-20/RV10-26
- * EATON C10.2 RV2-10/RV5-10
- * PARKER C10.2 RD102
- * HYDAC FC10-2 DB10P
- ETC...

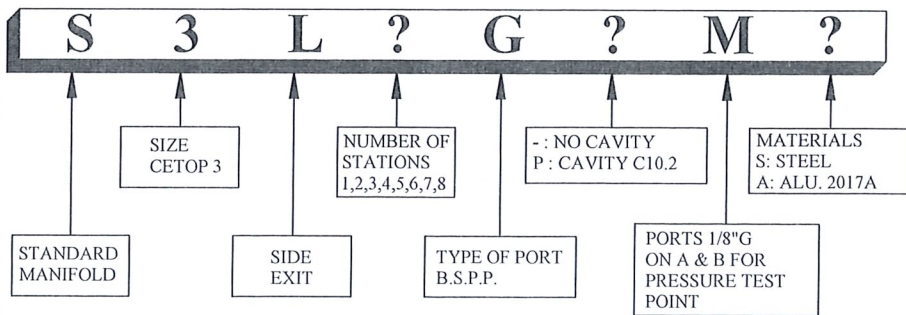
*** AND ALSO : DIRECTIONAL VALVE RESTRICTOR CHECK VALVE**



DIMENSIONS

| MODEL | A | weight (kg) | |
|---------|-----|-------------|-----|
| | | STEEL | ALU |
| S3L1GM | 70 | 2.1 | 0.8 |
| S3L1GPM | 80 | 2.3 | 0.8 |
| S3L2G-M | 120 | 3.6 | 1.4 |
| S3L3G-M | 170 | 5.1 | 1.9 |
| S3L4G-M | 220 | 6.7 | 2.5 |
| S3L5G-M | 270 | 8.3 | 3.0 |
| S3L6G-M | 320 | 9.9 | 3.6 |
| S3L7G-M | 370 | 11.5 | 4.1 |
| S3L8G-M | 420 | 13.1 | 4.6 |

MODEL CODE





NUMERHYD

MULTI-STATION MANIFOLD CETOP 5

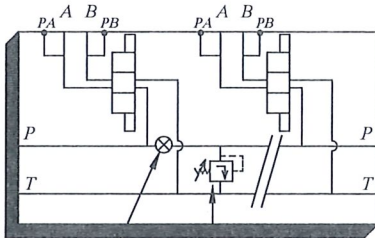
S5A

A24

REAR EXIT

- Sorties arrière.
- Rückseitig.

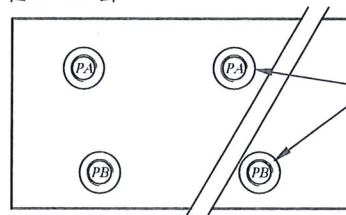
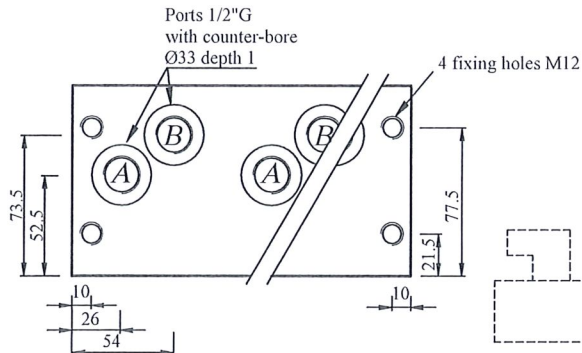
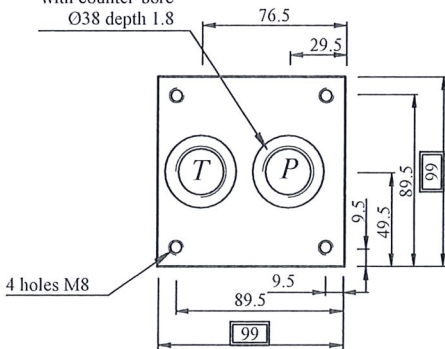
- Service pressure 420 bar for steel.
- Possibility to connect with a special manifold.
- Possibility to connect with several block S3 or S5 or S7.



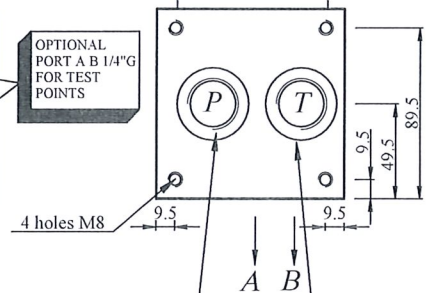
Cavity C16.2 optional

Tapped hole 3/4"G for possible plug (plug out of supply)

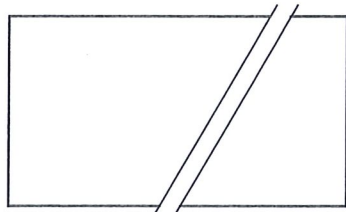
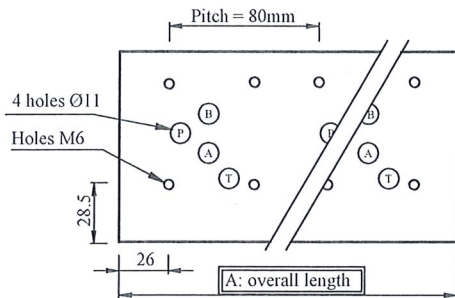
2 ports 3/4"G drilled through with counter-bore Ø38 depth 1.8



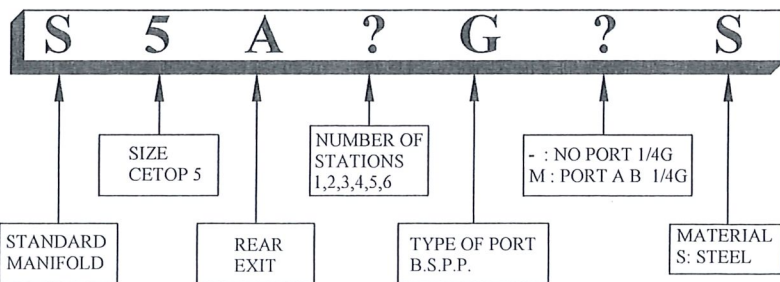
OPTIONAL PORT A B 1/4"G FOR TEST POINTS



Possible plug to separate the P of first station

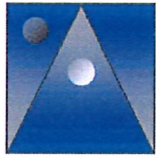


MODEL CODE



DIMENSIONS

| MODEL | A | weight (KG) |
|--------|-----|-------------|
| S5A1G- | 95 | 6 |
| S5A2G- | 175 | 11 |
| S5A3G- | 255 | 16 |
| S5A4G- | 335 | 22 |
| S5A5G- | 415 | 27 |
| S5A6G- | 495 | 32 |



NUMERHYD

MULTI-STATION MANIFOLD CETOP 5

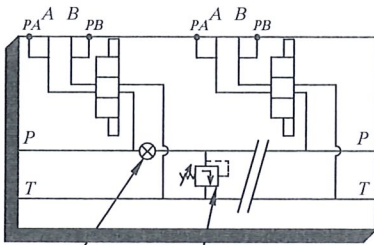
S5L

A24

SIDE EXIT

- Sorties latérales
- Seitlich

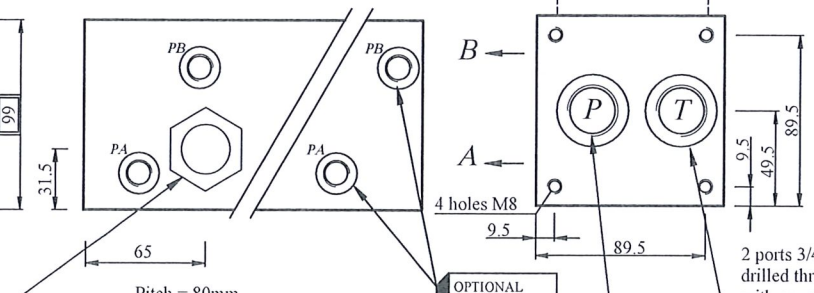
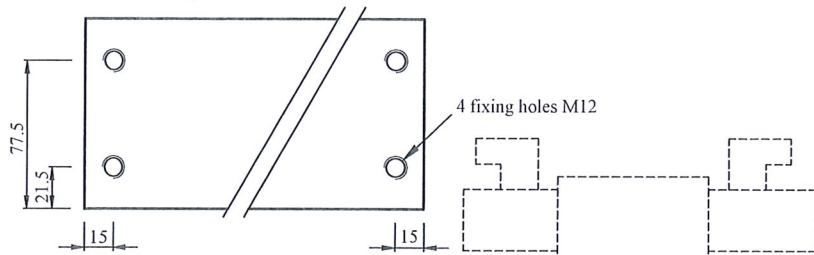
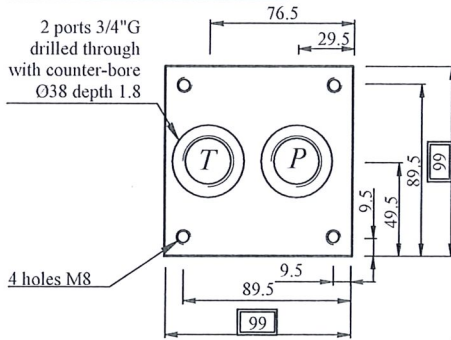
- Service pressure 420 bar for steel - 250bar for Aluminium alloy.
- Possibility to connect with a special manifold.
- Possibility to connect with several block S3 or S5.



Cavity C16.2 optional

Tapped hole 3/4"G for possible plug (plug out of supply)

2 ports 3/4"G drilled through with counter-bore Ø38 depth 1.8



OPTIONAL PORT A B 1/4"G FOR TEST POINTS

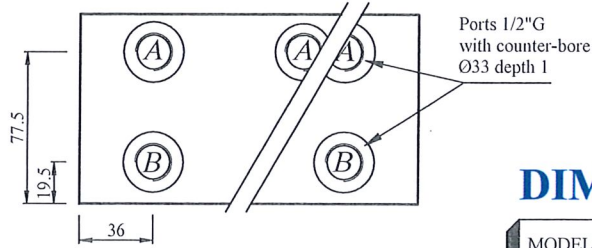
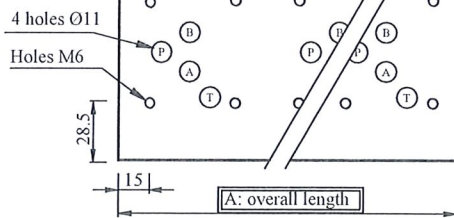
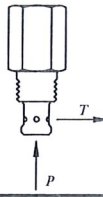
Possible plug to separate the P of first station

2 ports 3/4"G drilled through with counter-bore Ø38 depth 1.8

* OPTIONAL CAVITY FOR VALVE C16.2 COMPONENT FOR EXAMPLE : (OUT OF SUPPLY)

- * HYDRAFORCE VC16.2 RV16-26
- * EATON C16.2 RV5-16
- * PARKER C16.2 RAH16-1
- * HYDAC FC16.2 DB16P
- ETC...

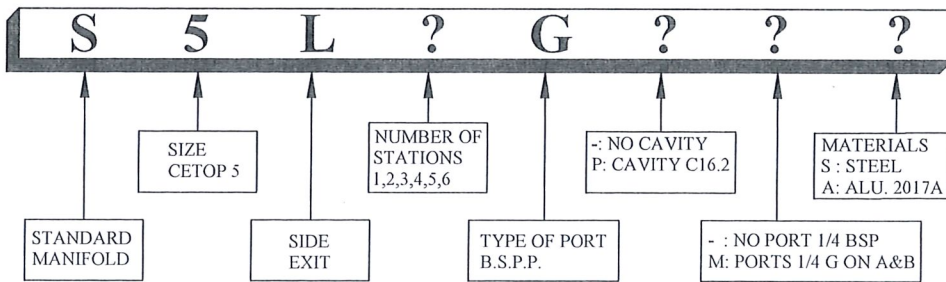
* AND ALSO :
DIRECTIONAL VALVE
RESTRICTOR
CHECK VALVE



DIMENSIONS

| MODEL | A | weight (kg) | |
|---------|-----|-------------|-----|
| | | STEEL | ALU |
| S5L1G- | 75 | 5 | 1.8 |
| S5L1GP- | 105 | 7 | 2.4 |
| S5L2G- | 155 | 10 | 3.5 |
| S5L3G- | 235 | 15 | 5.4 |
| S5L4G- | 315 | 20 | 7.1 |
| S5L5G- | 395 | 25 | 9.1 |
| S5L6G- | 475 | 30 | 11 |

MODEL CODE





MULTI-STATION MANIFOLD CETOP 7

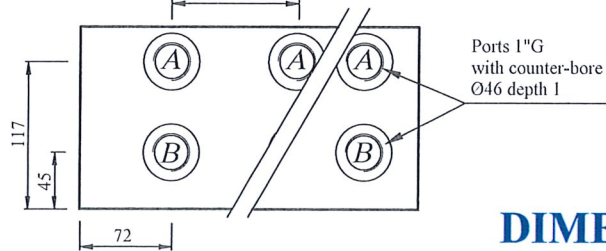
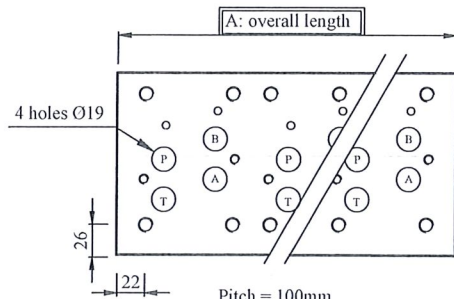
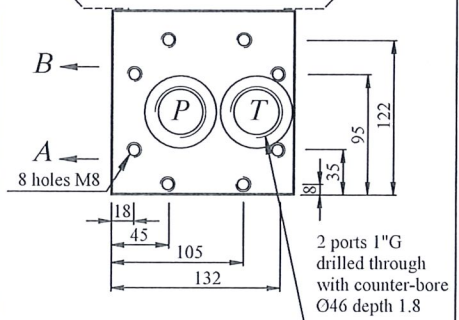
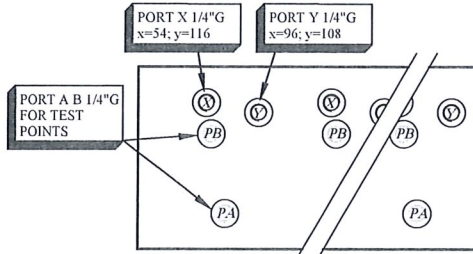
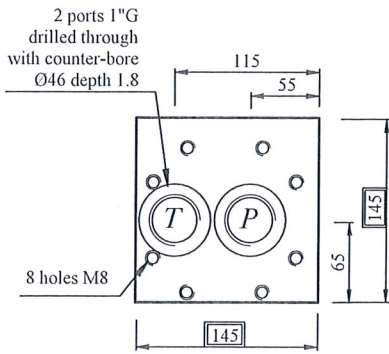
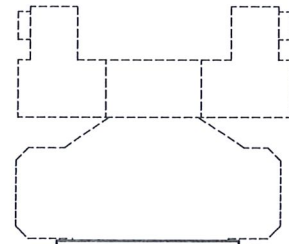
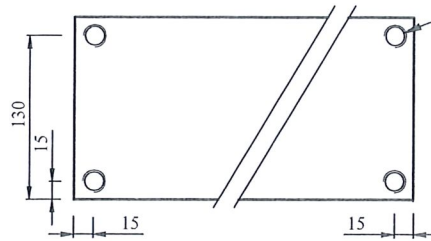
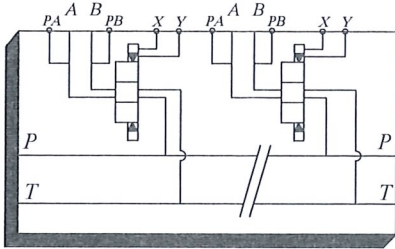
S7L

A24

SIDE EXIT

- Sorties latérales
- Seitlich

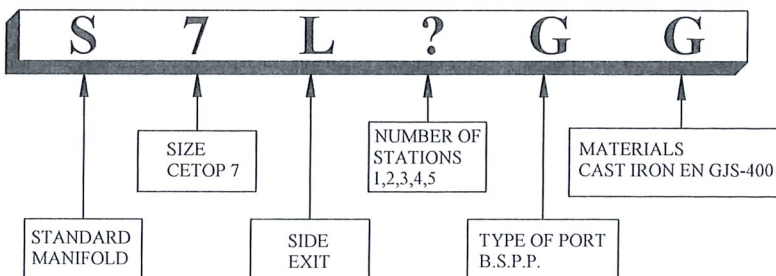
- Service pressure 420bar.
- Possibility to connect with a special manifold.
- Possibility to connect with several block S5 or S7.



DIMENSIONS

| MODEL | A | weight (KG) |
|--------|-----|-------------|
| S7L1GG | 115 | 15 |
| S7L2GG | 215 | 28 |
| S7L3GG | 315 | 40 |
| S7L4GG | 415 | 53 |
| S7L5GG | 515 | 65 |

MODEL CODE





NUMERHYD

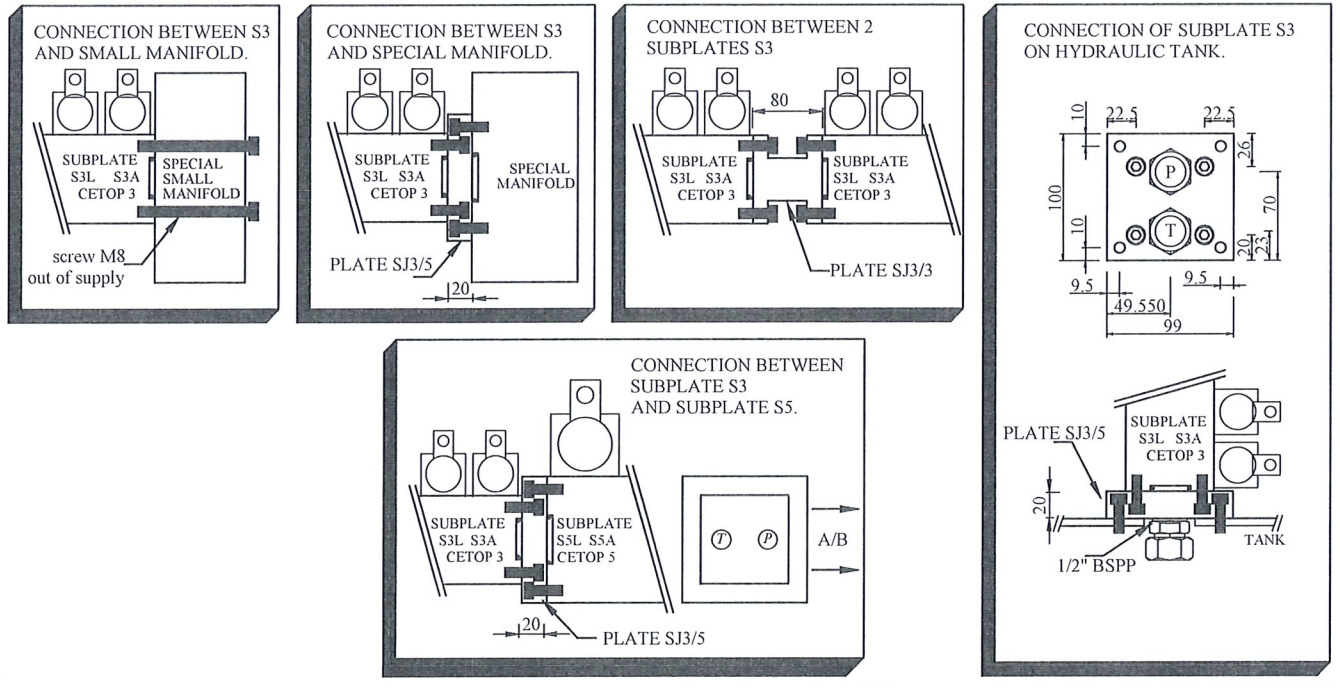
JUNCTION PLATE FOR MANIFOLD

SJ

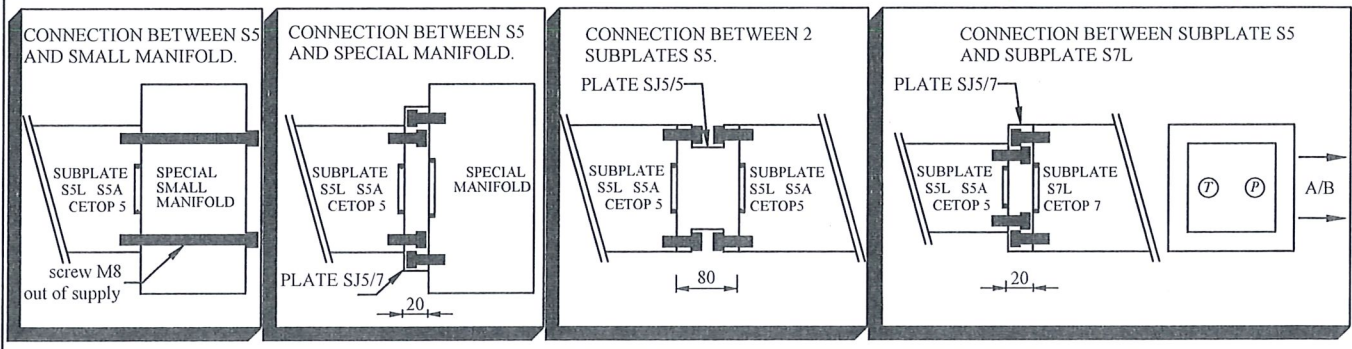
A24

- Service pressure 420 bar for steel - 300bar for aluminium alloy.
- Possibility to connect manifold S3 or S5 on special manifold.
- Possibility to connect several manifold S3 or S5.
- Achieve the continuity from P and T on each manifold.

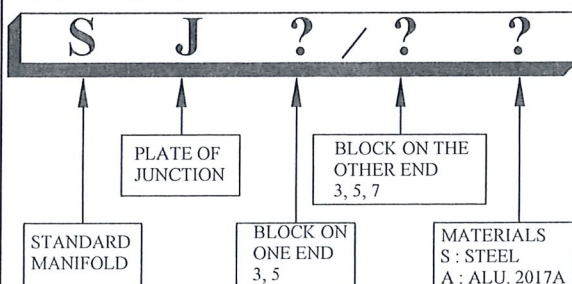
TO CONNECT MULTI-STATION CETOP 3 (S3L or S3A)



TO CONNECT MULTI-STATION CETOP 5 (S5L or S5A)



MODEL CODE



DIMENSIONS

| MODEL | SIZE | O-RING Nbr delivered | screw CHC 12.9 M8*25 delivered | weight (kg) | |
|---------|------------|-------------------------|--------------------------------------|-------------|-----|
| | | | | STEEL | ALU |
| SJ3/3-- | 70*69*80 | 4 Ø25.07*2.62 | 8 | 3 | 1 |
| SJ3/5-- | 100*99*20 | 2 Ø25.07*2.62 | 8 | 1.6 | 0.5 |
| | | 2 Ø32.99*2.62 | | | |
| SJ5/5-- | 100*99*80 | 4 Ø32.99*2.62 | 8 | 6.3 | 2.2 |
| SJ5/7-- | 130*130*20 | 2 Ø32.99*2.62 | 12 | 2.6 | 0.9 |
| | | 2 Ø40.95*2.62 | | | |

NUMERHYD

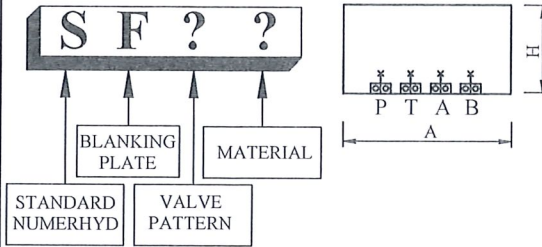
- CHC Screws and O-Ring are supplied
- Maxi pressure 420 bar

SF

A24

BLANKING PLATE

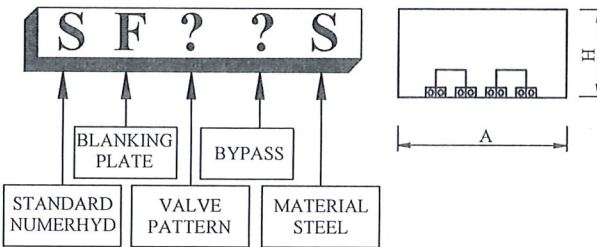
DIMENSIONS



| MODEL | VALVE PATTERN | O-RING NITRILE (NBR) | SCREW CHC 12.9 | MATERIAL | A | B | H | weight (kg) |
|-------|---------------|------------------------------------|---------------------|-----------|-----|-----|----|-------------|
| SF3S | CETOP 3 | 4*OR 9.25*1.78 | 4* M5*40 | STEEL | 70 | 45 | 30 | 0.7 |
| SF5S | CETOP 5 | 5*OR 12.42*1.78 2*OR 9.25*1.78 | 4*M6*40 | STEEL | 90 | 70 | 30 | 1.4 |
| SF7 | CETOP 7 | 4*OR 21.89*2.62 3*OR 9.25*1.78 | 4*M10*45 2*M6*40 | CAST-IRON | 125 | 90 | 30 | 2.5 |
| SF8 | CETOP 8 | 4*OR 32.92*3.53 3*OR 17.12*2.62 | 6*M12*50 | CAST-IRON | 155 | 115 | 45 | 5.5 |
| SF10 | CETOP 10 | 4*OR 47.22*3.53 3*OR 18.64*3.53 | 6*M20*60 | CAST-IRON | 230 | 200 | 55 | 18 |

BYPASS BLANKING PLATE

DIMENSIONS



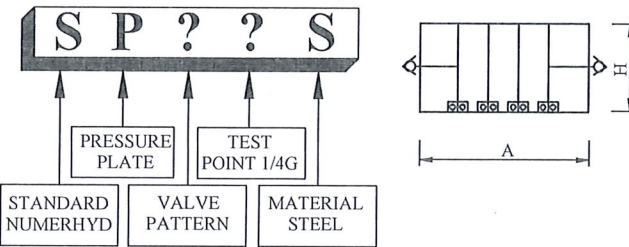
| MODEL | VALVE PATTERN | O-RING NITRILE (NBR) | SCREW CHC 12.9 | A | B | H | weight (kg) |
|--------|----------------------------------|-----------------------------------|----------------|----|----|----|-------------|
| SF3PAS | CETOP 3 BYPASS P<-->A; B<-->T | 4*OR 9.25*1.78 | 4* M5*40 | 70 | 45 | 30 | 0.7 |
| SF3PBS | CETOP 3 BYPASS P<-->B; A<-->T | 4*OR 9.25*1.78 | 4* M5*40 | 70 | 45 | 30 | 0.7 |
| SF5PAS | CETOP 5 BYPASS P<-->A; B<-->T | 5*OR 12.42*1.78 2*OR 9.25*1.78 | 4*M6*40 | 90 | 70 | 30 | 1.4 |
| SF5PBS | CETOP 5 BYPASS P<-->B; A<-->T | 5*OR 12.42*1.78 2*OR 9.25*1.78 | 4*M6*40 | 90 | 70 | 30 | 1.4 |

SANDWICH PRESSURE TEST PLATE

- O-Ring are supplied
- Maxi pressure 500bar

SP

A21/I



DIMENSIONS

| MODEL | DIAGRAM | O-RING NITRILE (NBR) | A | B | H | weight (kg) |
|--------|--------------------------------|-----------------------------------|----|----|----|-------------|
| SP3PS | CETOP 3 PORT 1/4"G ON P | 4*OR 9.25*1.78 | 70 | 45 | 30 | 0.7 |
| SP3ABS | CETOP 3 PORT 1/4"G ON A & B | 4*OR 9.25*1.78 | 70 | 45 | 30 | 0.7 |
| SP5PS | CETOP 5 PORT 1/4"G ON P | 5*OR 12.42*1.78 2*OR 9.25*1.78 | 90 | 70 | 30 | 1.4 |
| SP5ABS | CETOP 5 PORT 1/4"G ON A & B | 5*OR 12.42*1.78 2*OR 9.25*1.78 | 90 | 70 | 30 | 1.4 |

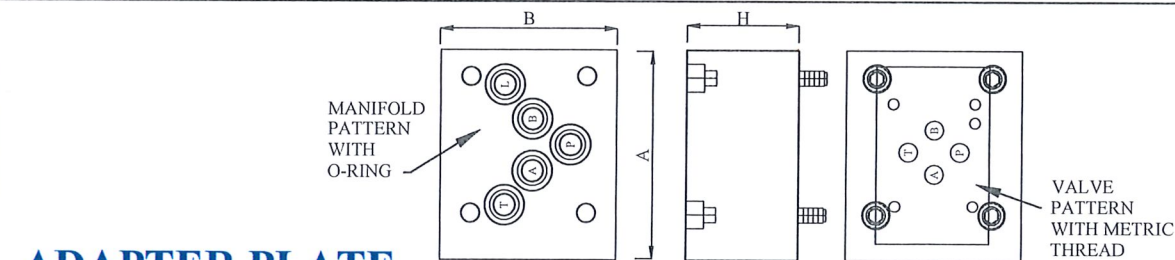
ADAPTER PLATE

DIMENSIONS

- CHC Screws and O-Ring are supplied

SA

A21/I



| MODEL | VALVE PATTERN / MANIFOLD PATTERN | O-RING NITRILE (NBR) | SCREW CHC 12.9 | MATERIAL | MAXI PRESSURE | A | B | H | weight (kg) |
|--------|---|------------------------------------|---------------------|-----------|---------------|-----|-----|----|-------------|
| SA3/0 | CETOP 3 / NG5 | 3*OR 6.00*1.00 1*OR 9.25*1.78 | 4*M5*50 | STEEL | 500bar | 60 | 45 | 50 | 0.9 |
| SA3/5 | CETOP 3 / CETOP 5 | 5*OR 12.42*1.78 2*OR 9.25*1.78 | 4*M6*50 | CAST-IRON | 500bar | 90 | 70 | 45 | 2 |
| SA3/7 | CETOP 3 / CETOP 7 | 4*OR 21.89*2.62 3*OR 9.25*1.78 | 4*M10*55 2*M6*55 | CAST-IRON | 350bar | 125 | 90 | 50 | 3.7 |
| SA5/7 | CETOP 5 / CETOP 7 | 4*OR 21.89*2.62 3*OR 9.25*1.78 | 4*M10*55 2*M6*55 | CAST-IRON | 350bar | 125 | 90 | 50 | 3.6 |
| SA5/8 | CETOP 5 / CETOP 8 | 4*OR 32.92*3.53 3*OR 17.12*2.62 | 6*M12*50 | CAST-IRON | 350bar | 155 | 115 | 45 | 5 |
| SA7/8 | CETOP 7 / CETOP 8 X and Y Connected | 4*OR 32.92*3.53 3*OR 17.12*2.62 | 6*M12*50 | CAST-IRON | 350bar | 155 | 115 | 45 | 4.9 |
| SA8/10 | CETOP 8 / CETOP 10 X and Y Connected | 4*OR 47.22*3.53 3*OR 18.64*3.53 | 6*M20*60 | CAST-IRON | 350bar | 230 | 200 | 55 | 16 |



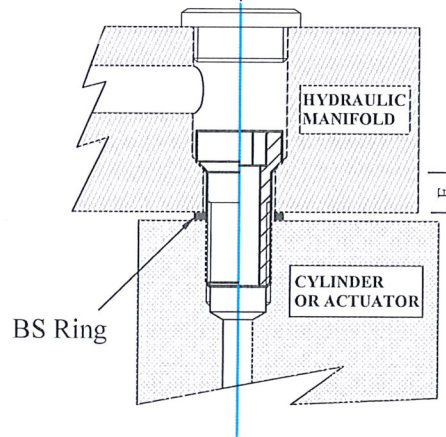
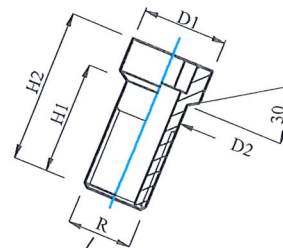
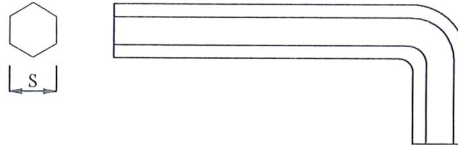
NUMERHYD

HOLLOW SCREW - VIS CREUSE

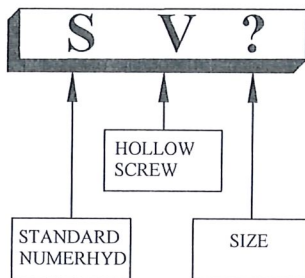
SV

A21/1

- Stud thread BSP Parallel (brunish steel)
- Max service pressure and tightening torque (see table below)
- BS Ring (NBR bonded Seal and Steel Ring)



MODEL CODE



DIMENSIONS

- BS Ring supplied

| MODEL | R | D1 | D2 | H1 | H2 | E | S | BS Ring | weight (g) | N.m | Bar |
|--------|------|------|------|------|----|----|----|------------------|------------|-----|-----|
| SV1/4G | 1/4" | 14.9 | 13.2 | 23.5 | 29 | 10 | 8 | 13.74*20.57*2.03 | 21g | 45 | 400 |
| SV3/8G | 3/8" | 18.5 | 16.7 | 23.5 | 29 | 10 | 10 | 17.28*23.80*2.03 | 33g | 70 | 400 |
| SV1/2G | 1/2" | 24.0 | 21.0 | 30.0 | 36 | 14 | 14 | 21.54*28.58*2.49 | 54g | 120 | 400 |
| SV3/4G | 3/4" | 29.5 | 26.5 | 38.0 | 48 | 20 | 19 | 27.05*34.93*2.49 | 105g | 230 | 315 |
| SV1G | 1" | 38.0 | 33.2 | 39.5 | 53 | 20 | 22 | 33.89*42.80*3.38 | 195g | 320 | 250 |